



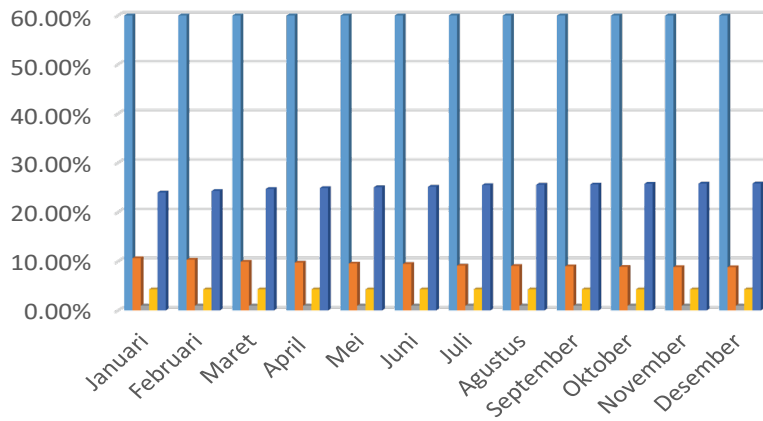
PEMEGANG SAHAM

(Per Bulan dari Tahun 2015 - 2019)





2015

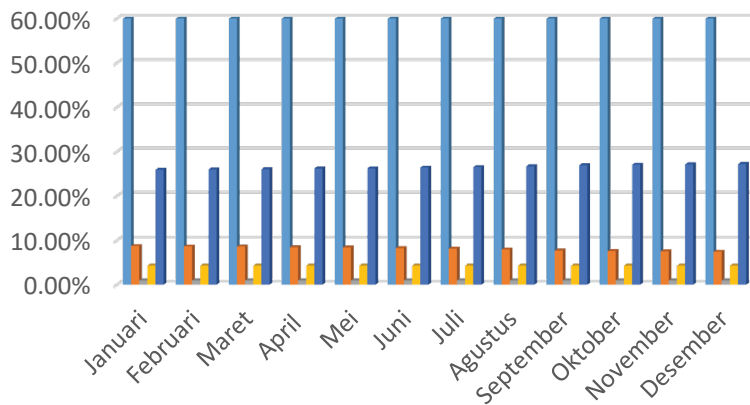


Keterangan:

- WIKA
- KKMS
- Yayasan WIKA
- Saham Treasuri
- Publik

2015												
	Januari	Februari	Maret	April	Mei	Juni	Juli	Agustus	September	Oktober	November	Desember
WIKI	60.00%	60.00%	60.00%	60.00%	60.00%	60.00%	60.00%	60.00%	60.00%	60.00%	60.00%	60.00%
KKMS	10.66%	10.34%	9.93%	9.75%	9.58%	9.48%	9.14%	9.07%	9.01%	8.88%	8.84%	8.82%
Yayasan WIKI	0.99%	0.99%	0.99%	0.99%	0.99%	0.99%	0.99%	0.99%	0.99%	0.99%	0.99%	0.99%
Saham Treasuri	4.33%	4.33%	4.33%	4.33%	4.33%	4.33%	4.33%	4.33%	4.33%	4.33%	4.33%	4.33%
Publik	24.02%	24.34%	24.75%	24.93%	25.10%	25.20%	25.54%	25.61%	25.67%	25.80%	25.84%	25.86%

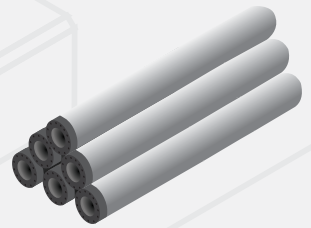
2016



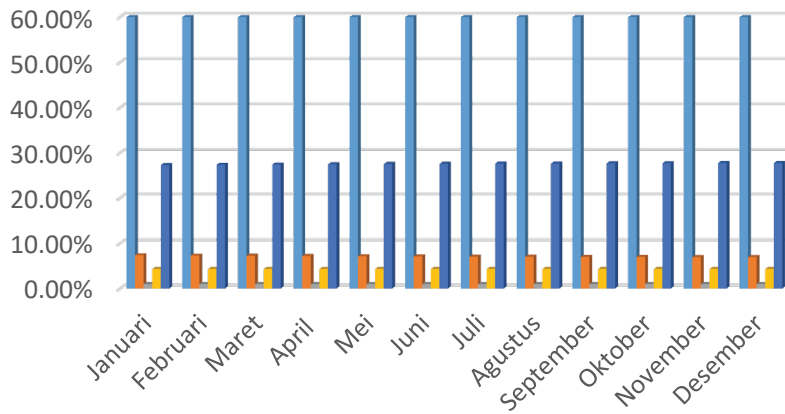
Keterangan:

- WIKI
- KKMS
- Yayasan WIKI
- Saham Treasuri
- Publik

2016												
	Januari	Februari	Maret	April	Mei	Juni	Juli	Agustus	September	Oktober	November	Desember
WIKI	60.00%	60.00%	60.00%	60.00%	60.00%	60.00%	60.00%	60.00%	60.00%	60.00%	60.00%	60.00%
KKMS	8.74%	8.67%	8.62%	8.46%	8.43%	8.25%	8.14%	7.96%	7.72%	7.60%	7.54%	7.46%
Yayasan WIKI	0.99%	0.99%	0.99%	0.99%	0.99%	0.99%	0.99%	0.99%	0.99%	0.99%	0.99%	0.99%
Saham Treasuri	4.33%	4.33%	4.33%	4.33%	4.33%	4.33%	4.33%	4.33%	4.33%	4.33%	4.33%	4.33%
Publik	25.94%	26.01%	26.06%	26.22%	26.25%	26.43%	26.54%	26.72%	26.96%	27.08%	27.14%	27.22%



2017

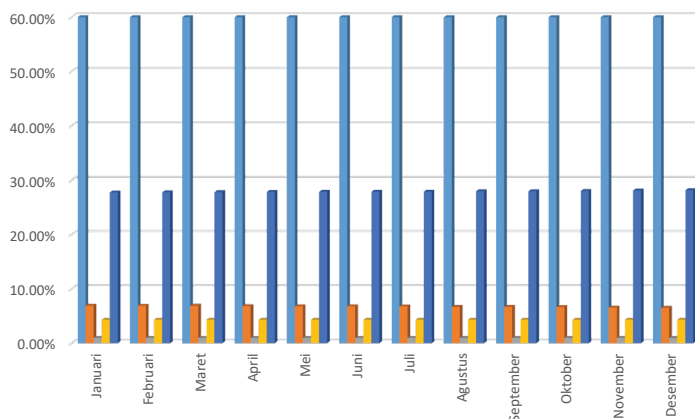


Keterangan:

- WIKA
- KKMS
- Yayasan Wika
- Saham Treasuri
- Publik

	2017											
	Januari	Februari	Maret	April	Mei	Juni	Juli	Agustus	September	Oktober	November	Desember
WIKI	60.00%	60.00%	60.00%	60.00%	60.00%	60.00%	60.00%	60.00%	60.00%	60.00%	60.00%	60.00%
KKMS	7.38%	7.32%	7.26%	7.21%	7.15%	7.12%	7.04%	7.04%	6.99%	6.99%	6.93%	6.93%
Yayasan WIKI	0.99%	0.99%	0.99%	0.99%	0.99%	0.99%	0.99%	0.99%	0.99%	0.99%	0.99%	0.99%
Saham Treasuri	4.33%	4.33%	4.33%	4.33%	4.33%	4.33%	4.33%	4.33%	4.33%	4.33%	4.33%	4.33%
Publik	27.30%	27.36%	27.42%	27.47%	27.53%	27.56%	27.64%	27.64%	27.69%	27.69%	27.75%	27.75%

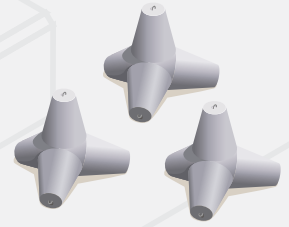
2018



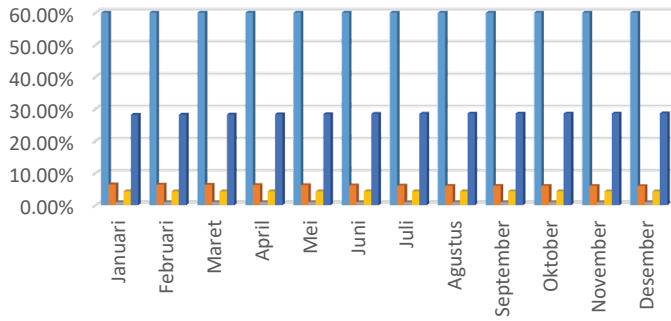
Keterangan:

- WIKI
- KKMS
- Yayasan Wika
- Saham Treasuri
- Publik

	2018											
	Januari	Februari	Maret	April	Mei	Juni	Juli	Agustus	September	Oktober	November	Desember
WIKI	60.00%	60.00%	60.00%	60.00%	60.00%	60.00%	60.00%	60.00%	60.00%	60.00%	60.00%	60.00%
KKMS	6.92%	6.91%	6.88%	6.84%	6.81%	6.81%	6.80%	6.70%	6.70%	6.67%	6.57%	6.51%
Yayasan WIKI	0.99%	0.99%	0.99%	0.99%	0.99%	0.99%	0.99%	0.99%	0.99%	0.99%	0.99%	0.99%
Saham Treasuri	4.33%	4.33%	4.33%	4.33%	4.33%	4.33%	4.33%	4.33%	4.33%	4.33%	4.33%	4.33%
Publik	27.76%	27.77%	27.80%	27.84%	27.87%	27.87%	27.88%	27.98%	27.98%	28.01%	28.11%	28.17%



2019



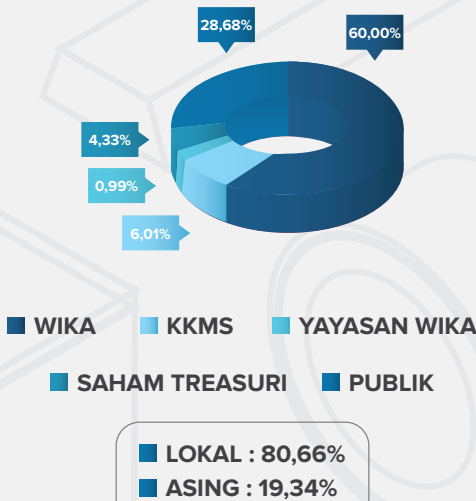
Keterangan:

- WIKA
- KKMS
- Yayasan Wika
- Saham Treasuri
- Publik

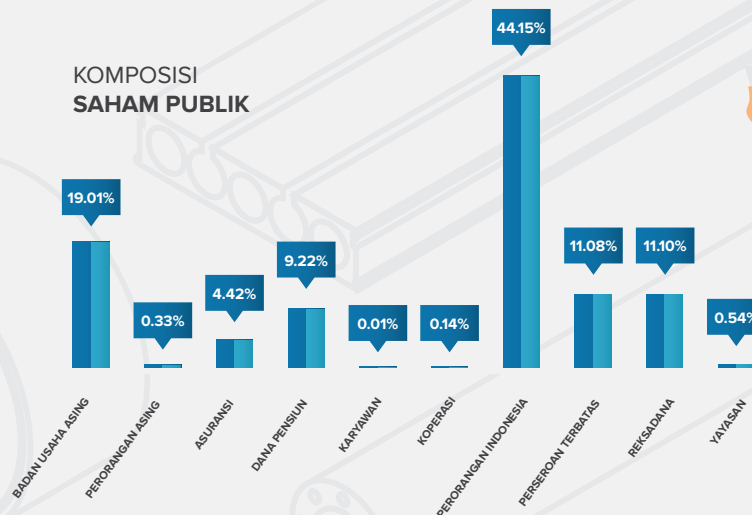
	2019											
	Januari	Februari	Maret	April	Mei	Juni	Juli	Agustus	September	Oktober	November	Desember
WIKI	60.00%	60.00%	60.00%	60.00%	60.00%	60.00%	60.00%	60.00%	60.00%	60.00%	60.00%	60.00%
KKMS	6.49%	6.45%	6.40%	6.30%	6.28%	6.17%	6.13%	6.06%	6.06%	6.05%	6.04%	6.00%
Yayasan WIKI	0.99%	0.99%	0.99%	0.99%	0.99%	0.99%	0.99%	0.99%	0.99%	0.99%	0.99%	0.99%
Saham Treasuri	4.33%	4.33%	4.33%	4.33%	4.33%	4.33%	4.33%	4.33%	4.33%	4.33%	4.33%	4.33%
Publik	28.19%	28.23%	28.28%	28.38%	28.40%	28.51%	28.55%	28.62%	28.62%	28.63%	28.64%	28.68%

KOMPOSISI PEMEGANG SAHAM

DESEMBER 2019



KOMPOSISI SAHAM PUBLIK





www.wika-beton.co.id